

DESIGNER RESIDENCE - TIMELESS ELEGANCE

Price: POR N\$

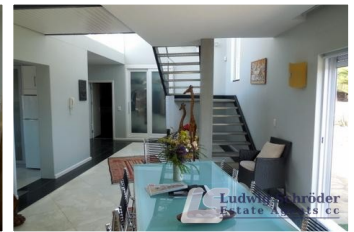
City:

Description:

Located on the riverfront with extensive views of the dunes & towards the sea, the design of this luxurious property is of architectural merit. The double volume lounge with steel staircase receives optimal sun and light penetration. Marble flooring (Namib Jade) and sophisticated lighting fixtures, coupled with antique finishes, places this property in a class of its own.

This property features the following:

- 3 Bedrooms with BIC.
- 2 Bathrooms (1 spacious en-suite & 1 separate).
- Top quality kitchen with granite tops.
- Double volume dining area.
- Spacious lounge area with double sided fireplace.
- Ground floor terrace & 1st floor patio to north.
- Quadruple garage & hobby room.



Agent name: Ludwig Schröder Estate Agents CC

Listing type: For Sale

Bathrooms: 2

Bedrooms: 3

Listing status: Active

Property type: House

Garages: 4

Exterior: Balcony / Balkon, Garage,
Garden/Garten, Outdoor Braai/ Externer Grill

Interior: Airconditioning/ Klimaanlage, Bar
Area/Bar Platz, Dining area / Esszimmer, Entrance
Hall / Eingangshalle, Fireplace/Kamin

Specific: Guest Toilet/Gästetoilette, Modern
